

**IMPROVING  
BUSINESS.  
IN YOUR WORLD**

# VEHICLES



YOUR  
PACKAGING  
SOLUTION.

**NEFAB**





We offer complete packaging solutions with global service and supply for customers in the vehicle industry.

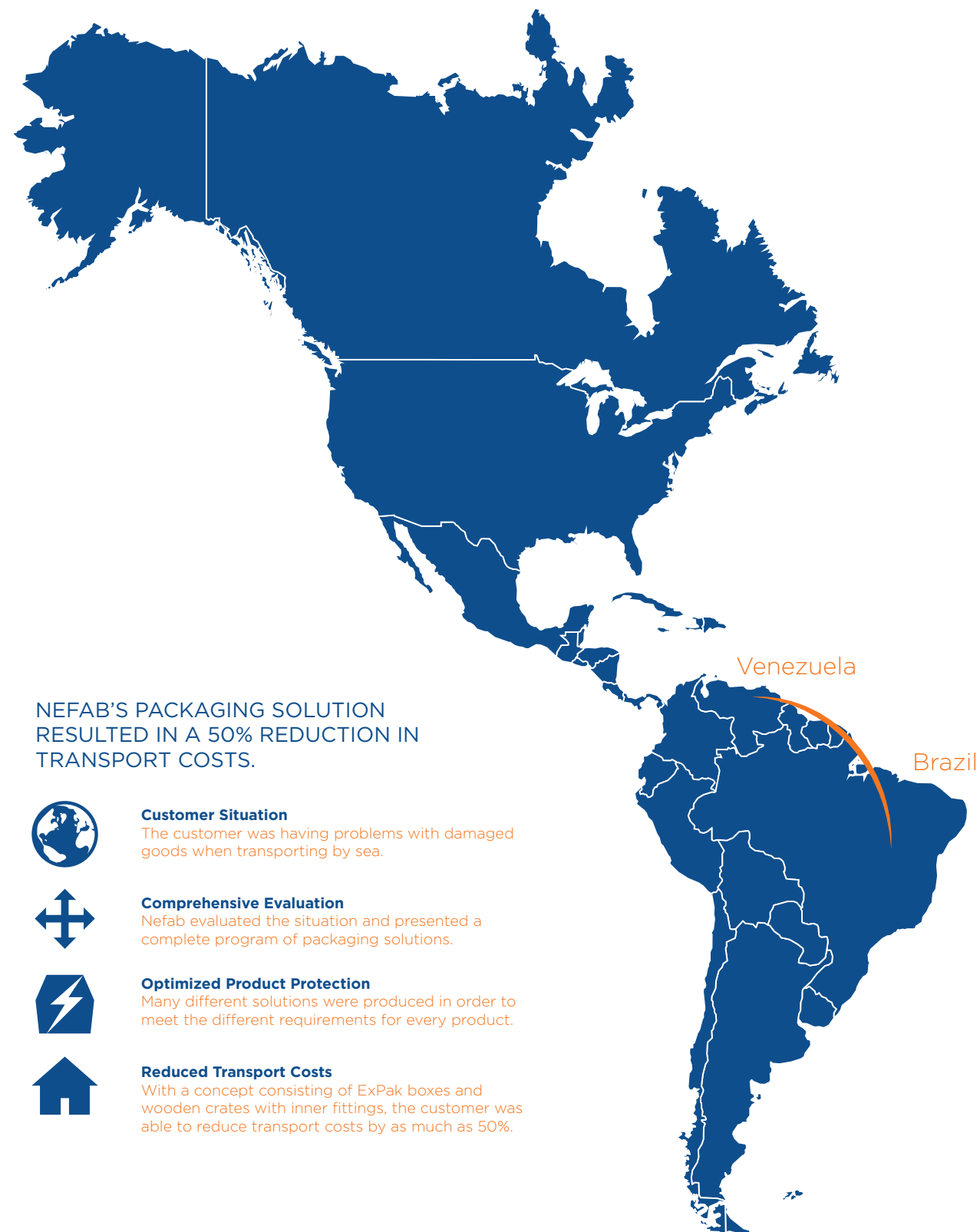
## OPTIMIZED PACKAGING SOLUTIONS WITH GLOBAL COORDINATION AND LOCAL SERVICE

THE VEHICLE INDUSTRY IS A POWERFUL DRIVING FORCE IN THE WORLD MARKET OF PACKAGING PRODUCTS. THE INDUSTRY ACCOUNTS FOR MORE THAN 40% OF ALL INDUSTRIAL AND TRANSPORT PACKAGING WORLDWIDE. IT IS A HIGHLY GLOBALIZED INDUSTRY WITH ADVANCED DEVELOPMENT, MANUFACTURING AND LOGISTICS FLOWS.

→ The complexity of the vehicle industry requires a wide variety of packaging materials as well as the ability to design customized solutions. Packaging solutions for the industry can be designed as either expendable or returnable packaging, and must always be able to withstand stresses over long distances. Nefab distinguishes itself by being a global company that is well-versed

in multi-material design and that can offer complex packaging solutions. Our global platform enables us to provide customers with service at a local level in combination with worldwide coordination. Our mission is to help our customers fulfill their commitments in a safe, convenient and cost-effective manner.





NEFAB'S PACKAGING SOLUTION RESULTED IN A 50% REDUCTION IN TRANSPORT COSTS.

**Customer Situation**

The customer was having problems with damaged goods when transporting by sea.

**Comprehensive Evaluation**

Nefab evaluated the situation and presented a complete program of packaging solutions.

**Optimized Product Protection**

Many different solutions were produced in order to meet the different requirements for every product.

**Reduced Transport Costs**

With a concept consisting of ExPak boxes and wooden crates with inner fittings, the customer was able to reduce transport costs by as much as 50%.

CUSTOMER CASE: FROM BRAZIL TO VENEZUELA

## REDUCED COSTS WITH EFFICIENT NEFAB EXPAK CONCEPT

BY ALLOWING NEFAB TO CONDUCT A COMPREHENSIVE EVALUATION OF PRODUCT SHIPMENTS, THE CUSTOMER WAS ABLE TO IMPLEMENT A CONCEPT THAT REDUCED THEIR TOTAL TRANSPORT COSTS BY 50%.

→ A truck manufacturer was facing problems with their container shipments. The containers contained truck parts and were shipped from Brazil to Venezuela, a transport that entailed several weeks at sea. When arriving at the final destination, the truck parts were often in poor condition. This resulted in high replacement costs and emergency deliveries to ensure consistent flow in the assembly line.

**COMPLEX FEATURES**

When Nefab was contacted by the manufacturer, a comprehensive evaluation was conducted to initiate the process. Shortly thereafter, Nefab was able to present a complete program of packaging solutions for all the various truck parts. In total, over forty different packaging solutions with varying degrees of complexity

were implemented in order to meet the different requirements for every product.

**NEFAB EXPAK CONCEPT**

The basis of the packaging program consisted of Nefab ExPak boxes and wooden crates with inner fittings. The project also included packaging instructions for assembly at the final destination. The solutions that Nefab provided resulted in reduced product damages and increased cost savings. The packaging was designed so that the truck manufacturer was better able to utilize the space in the sea container, thereby reducing its transport costs by as much as 50%.



PLACE: GUADALAJARA, MEXICO LAT: 20°67.3'N, LONG: 103°34.3'W

# REDUCING ENVIRONMENTAL IMPACT. IN YOUR WORLD



SCAN THE QR CODE WITH YOUR  
SMARTPHONE TO SEE A VIDEO  
ABOUT NEFAB'S TOTAL COST  
APPROACH.





## PRODUCT OFFERING

## EXPENDABLE

OUR EXPENDABLE PACKAGING OFFERS PRACTICAL AND COST-EFFECTIVE SOLUTIONS FOR EXPORT SHIPMENTS. THE EXPENDABLE PACKAGING CAN EASILY BE ADAPTED TO DIFFERENT CLIMATE CONDITIONS, HANDLING METHODS AND OTHER REQUIREMENTS.

→ Plywood Boxes | Corrugated Boxes | Wooden Boxes



## RETURNABLE

A RETURNABLE PACKAGING SYSTEM IS PERFECTLY SUITED FOR CLOSED LOGISTICS SYSTEMS WITH FIXED DISTRIBUTION AND ARRIVAL POINTS. BY REPLACING ONE-WAY PACKAGING WITH A RETURNABLE SOLUTION, MATERIAL USE CAN BE MINIMIZED FOR ECONOMIC AND ENVIRONMENTAL BENEFITS.

→ Plywood Containers | Plastic Containers | Pallet Collars

TOTAL  
COST  
APPROACH

"A PACKAGING SOLUTION SHOULD SAVE MORE THAN IT COSTS." THOSE ARE THE WORDS OF RUBEN RAUSING, FOUNDER OF TETRA PAK. THIS IS ALSO THE CORE OF NEFAB'S OFFERING. PACKAGING COSTS REPRESENT A RELATIVELY SMALL SHARE OF A MANUFACTURING COMPANY'S TOTAL COSTS. HOWEVER, THE CHOICE OF PACKAGING SOLUTION HAS A MAJOR INDIRECT IMPACT ON OTHER COST ITEMS.

**TRANSPORT**

Optimizing packaging size & weight to increase transport efficiency (Cost and CO<sub>2</sub>).

**ADMINISTRATION**

Reducing costs for order administration via EDI & VMI solutions. Delivering complete packaging sets.

**WAREHOUSE**

Reducing the need for storage space and capital costs for finished goods as well as packaging stock.

**PRODUCT PROTECTION**

Optimizing packaging solutions in terms of cost for product protection in relation to cost for damages.

**HANDLING**

Reducing packing time and improving ergonomics.

**ENVIRONMENT**

Improving or eliminating waste handling, and increasing reusability.

# IMPROVING BUSINESS. IN YOUR WORLD



Our **TOTAL COST APPROACH** ensures that packaging is optimized, reducing total cost in your supply chain.



With our **MULTI-MATERIAL ENGINEERING** capabilities, we can develop sustainable packaging solutions for any product.



In addition, our **GLOBAL SUPPLY & SERVICE** capabilities enable us to provide both local support and global coordination, wherever you are.



Your mission is our mission. We develop complete packaging solutions optimized to reduce total cost and environmental impact in your supply chain. With our global engineering and supply capabilities, we serve you in every corner of the world.

[NEFAB.COM](https://www.nefab.com)

**NEFAB** YOUR  
PACKAGING  
SOLUTION.