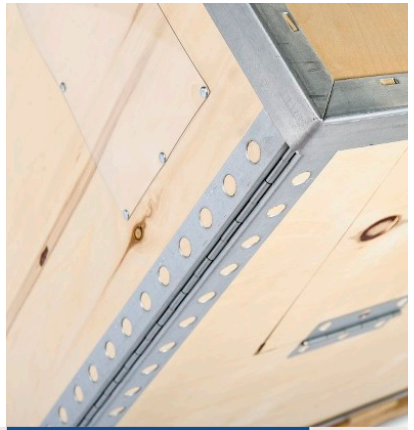


NEFAB REPAK L2

An adaptable, compact and lightweight reusable packaging system with exceptional volume utilisation and collapsibility ratio.



Type L2
RETURNABLE PACKAGING

Nefab Repak L2

The Nefab RePak L2 has been employed successfully in various applications for a number of years, particularly in the automotive market. Its intelligent, lightweight design offers exceptional performance in terms of volume utilisation and collapsibility ratio. This ensures optimal cost efficiency for both the outward and return journey.

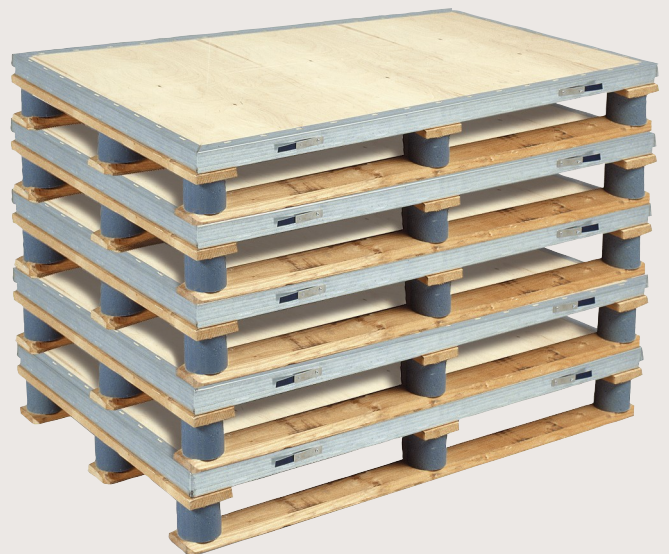
The user-friendly container is easy to assemble and collapse, due to the integrated spring locking system, which eliminates strapping. When collapsed, the container parts are well secured.

The angle profiles in the lid and base, the ingenious locking system and the durable birch material are a combination resulting in a highly rigid and proven design. Under regular operating conditions, a single Nefab RePak L2 can replace more than 50 expendable packages. Lifetimes of even more than 100 transport cycles have been reported.

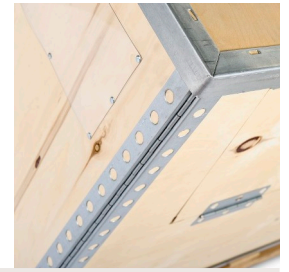
The combination of steel and sheet material offers great flexibility in design so that the container can be dimensionally customised according to specifications. Optional features, such as inner fittings, are also available.



Scan the QR-Code to see how our RePak solutions can help you with your returnable flows.



SPECIFICATIONS NEFAB REPAK L2



General data

Material specifications

Sheet material specification	Lacquered birch plywood, WBP CP/C grade
Steel specification	Galvanized, euronorm DX51D+Z200
Sheet material thickness, lid	8 mm
Sheet material thickness, base	8 mm
Sheet material thickness, frame	6 mm
Steel material thickness	Hinges 0.8 mm; profiles 1.5 mm
Pallet	Four-way wooden pallet with plastic blocks

Marking

Other	Hinged gates, plastic locks
Recommended min. size, internal	600x400x487 mm
Recommended max. size, internal	2200x1000x1087 mm

Tech performance

Max. net weight of goods	500 kg
Max. stacking load (static)	6000 kg
Functional temperature	-40°C to 80°C
Mechanical strength test report	SP 92 M 122 85 B

Standard size

Box specifications: 1200 x 800 mm

External dimension, erected box (LxWxH)	1200x800x887 mm
Internal dimension, erected box	1170x770x750 mm
External dimension, collapsed box	1200x800x168 mm
External volume, erected box	0.85 m ³
Internal volume, erected box	0.68 m ³
Volume efficiency (internal/external)	0.79
Return ratio (collapsed/erected)	5.3:1
Tare weight	42 kg

Logistic performance

	goods volume	Erected	Collapsed
Eurotrailer, 82 m ³	68	45.9m ³	476
48 ft. trailer	108	52.7m ³	576
20 ft. dry freight container	22	14.9m ³	143
40 ft. dry freight container	46	33.8m ³	299