

NEFAB REPAK LE

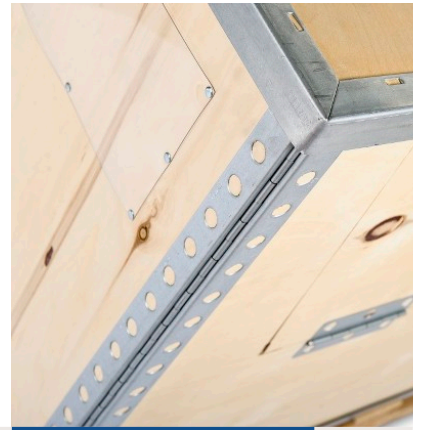
An adaptable, compact and lightweight reusable packaging system, with exceptional volume utilisation and collapse ratio.

Nefab RePak LE

The Nefab RePak type LE is the perfect solution for return freights since the box is totally integrated - all parts are connected. This facilitates improved pack handling, resulting in time-savings in the logistic process. Due to this construction it is also easy to assemble and collapse. The angle profiles in lid and base and the durable birch material are a combination resulting in a highly rigid and proven design. The thin walls of the package saves valuable load and storage space. The minimal volume when collapsed and the low weight are advantages that makes it possible to have a low return freight cost, even when it is a long distance. One Nefab RePak type LE can, when handled under regular operating conditions, replace more than 50 expandable packages. The choice with a hinged gate makes the packing and unpacking easier in an ergonomic suitable way. The smooth plywood surface is lacquered to give the package additional durability when used in hard conditions.

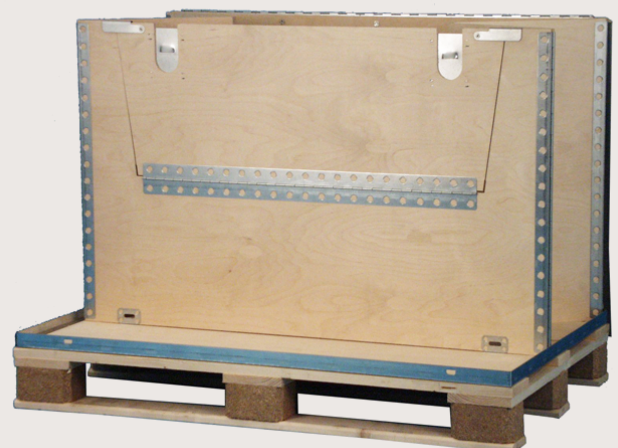
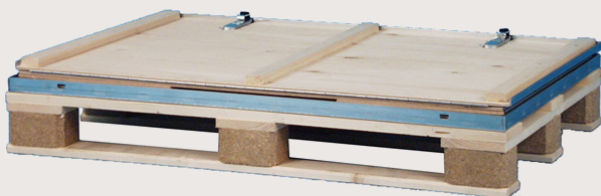
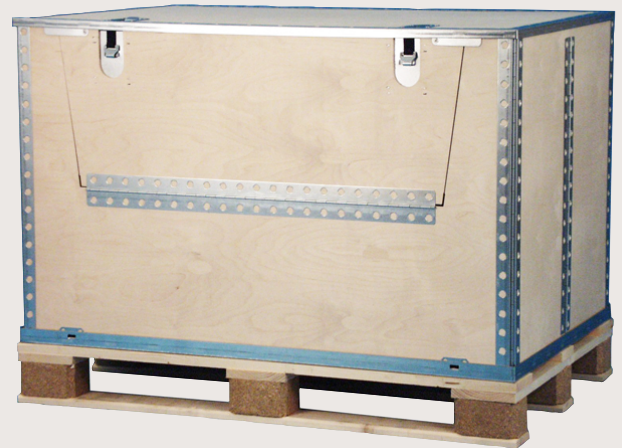
Benefits

- No loose parts
- Light
- Easy to assemble

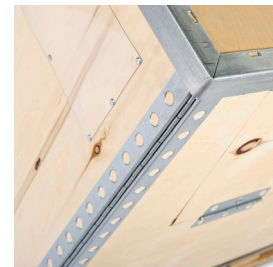


RePak LE

BE NEFAB



SPECIFICATIONS NEFAB REPAK TYPE LE



General data

Material specifications

Sheet material specification	Lacquered birch plywood, WBP CP/C grade
Steel specification	Galvanized, euronorm DX51D+Z200
Sheet material thickness, lid	6 mm
Sheet material thickness, base	8 mm
Sheet material thickness, frame	6 mm
Steel material thickness	Hinges 0.8 mm; profiles 1.5 mm
Pallet	Four-way wooden pallet with plastic blocks

Marking

Other	Hinged gate
Recommended min. size, external	600x400x485 mm
Recommended min. size, external	1200x1000x1085 mm

Tech performance

Max. net weight of goods	500 kg
Max. stacking load (static)	6000 kg
Functional temperature	-40°C to 80°C

Standard size

Box specifications: 1200 x 800 mm

External dimension, erected box (LxWxH)	1200x800x885 mm
Internal dimension, erected box	1170x770x730 mm
External dimension, collapsed box	1200x800x220 mm
External volume, erected box	0,85 m ³
Internal volume, erected box	0,66 m ³
Volume efficiency (internal/external)	0.78
Return ratio (collapsed/erected)	4:1
Tare weight	47,5 kg

Logistic performance

	Goods Volume	Erected	Collapsed
Eurotrailer, 82 m ³	68	44,8m ³	340
48 ft. trailer	108	51,5m ³	432
20 ft. dry freight container	22	14,5m ³	110
40 ft. dry freight container	46	33,0m ³	230