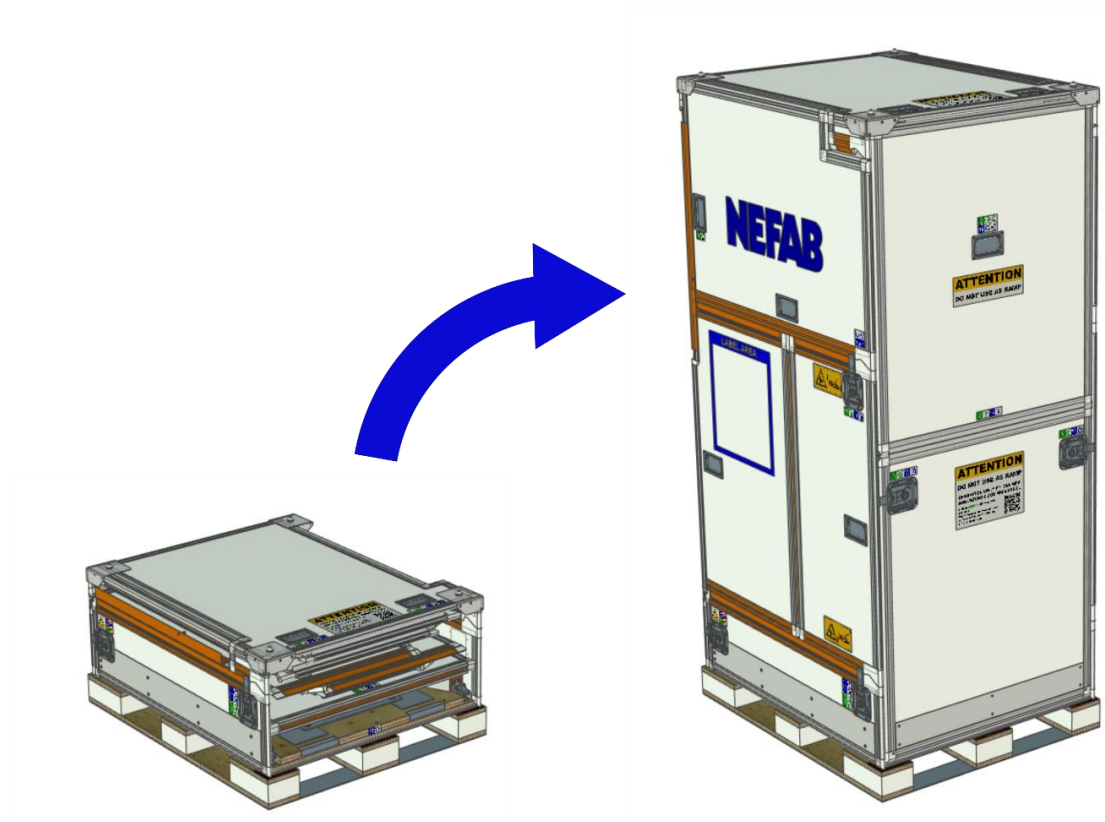


RACKPAK REAR HATCH INSTRUCTIONS



VERSION 2020-06-03

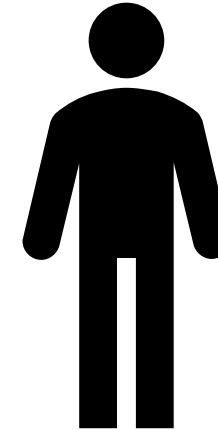


RACKPAK REAR HATCH INSTRUCTIONS



REQUIRED PEOPLE

- This job requires one person
- Use steel-toe safety boots
- No tools needed

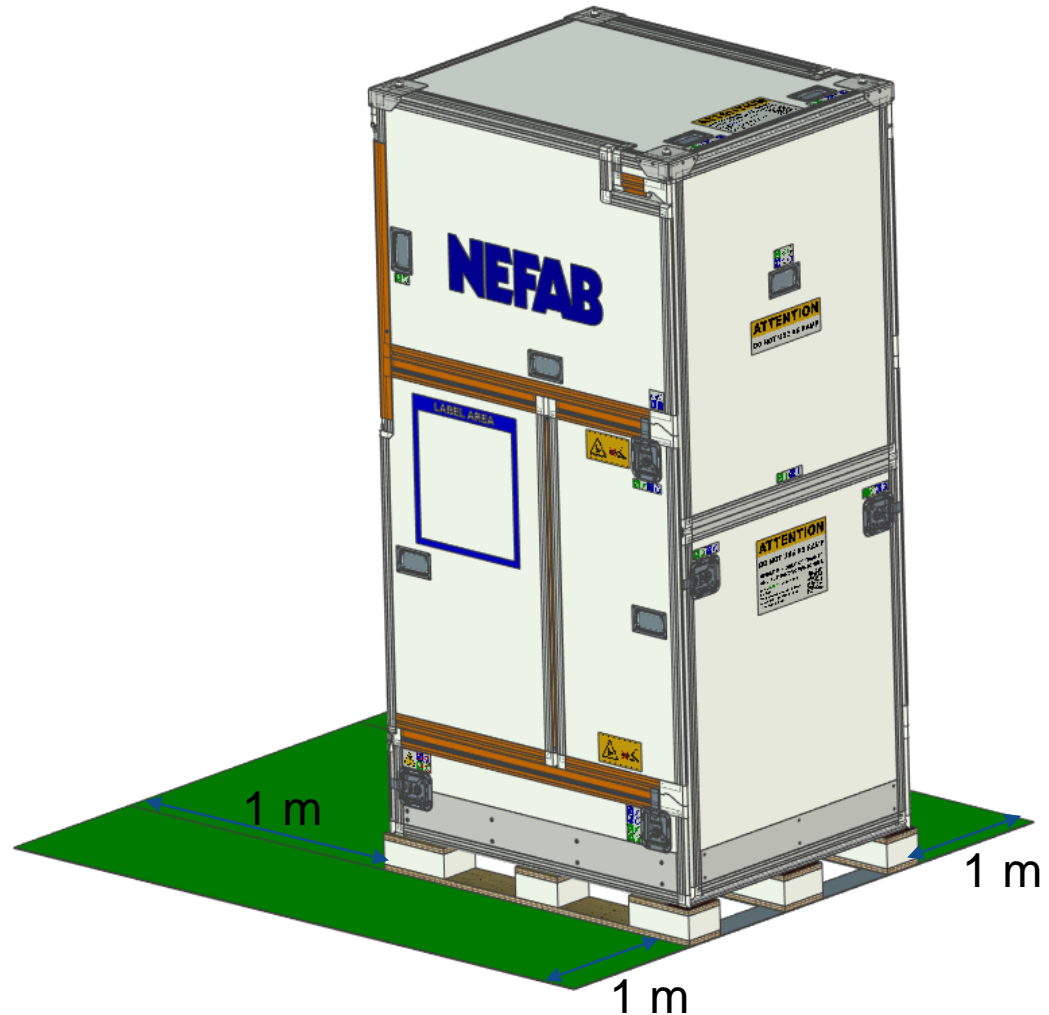


RACKPACK REAR HATCH INSTRUCTIONS



REQUIRED SPACE

- 1.0 meter behind product
- 1.0 meter on both sides of product

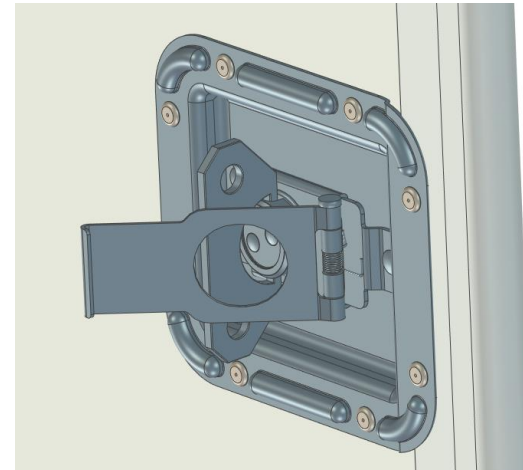
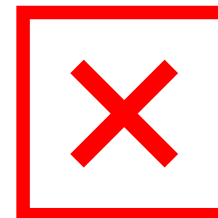
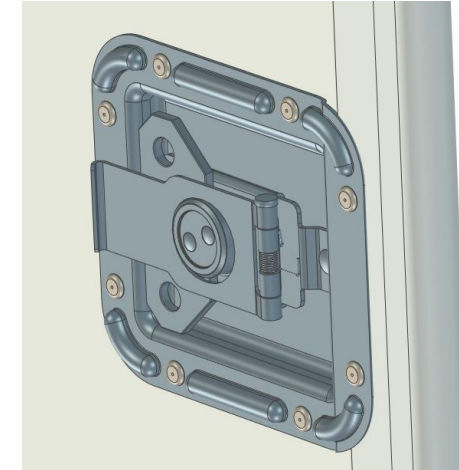


RACKPAK REAR HATCH INSTRUCTIONS



SAFETY WARNINGS

- When opening latches, make sure to fold back the arm and buckle completely.

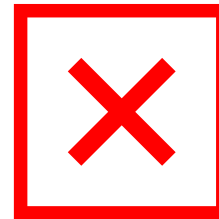


RACKPAK REAR HATCH INSTRUCTIONS



SAFETY WARNINGS

- Use handles where provided to set up product
- While unfolding the product, do not place your hands where they may get pinched.

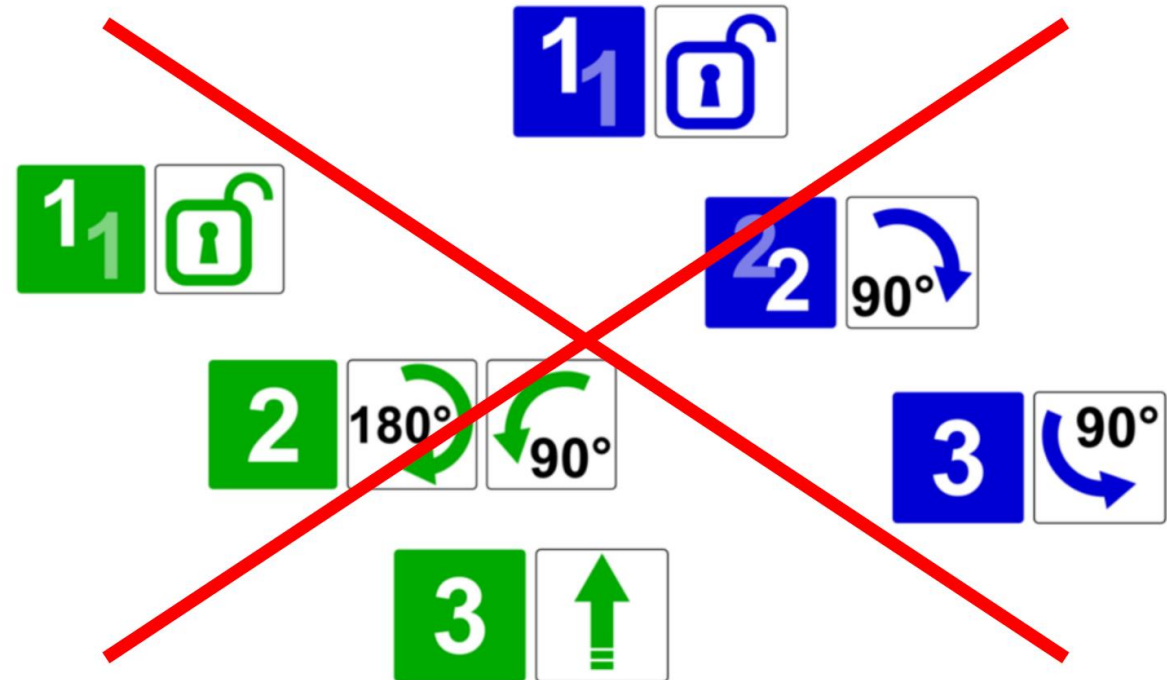


RACKPACK REAR HATCH INSTRUCTIONS



LABELS

- RackPak is marked with color coded labels.
- Note that these are *not relevant* for operating the rear hatch.



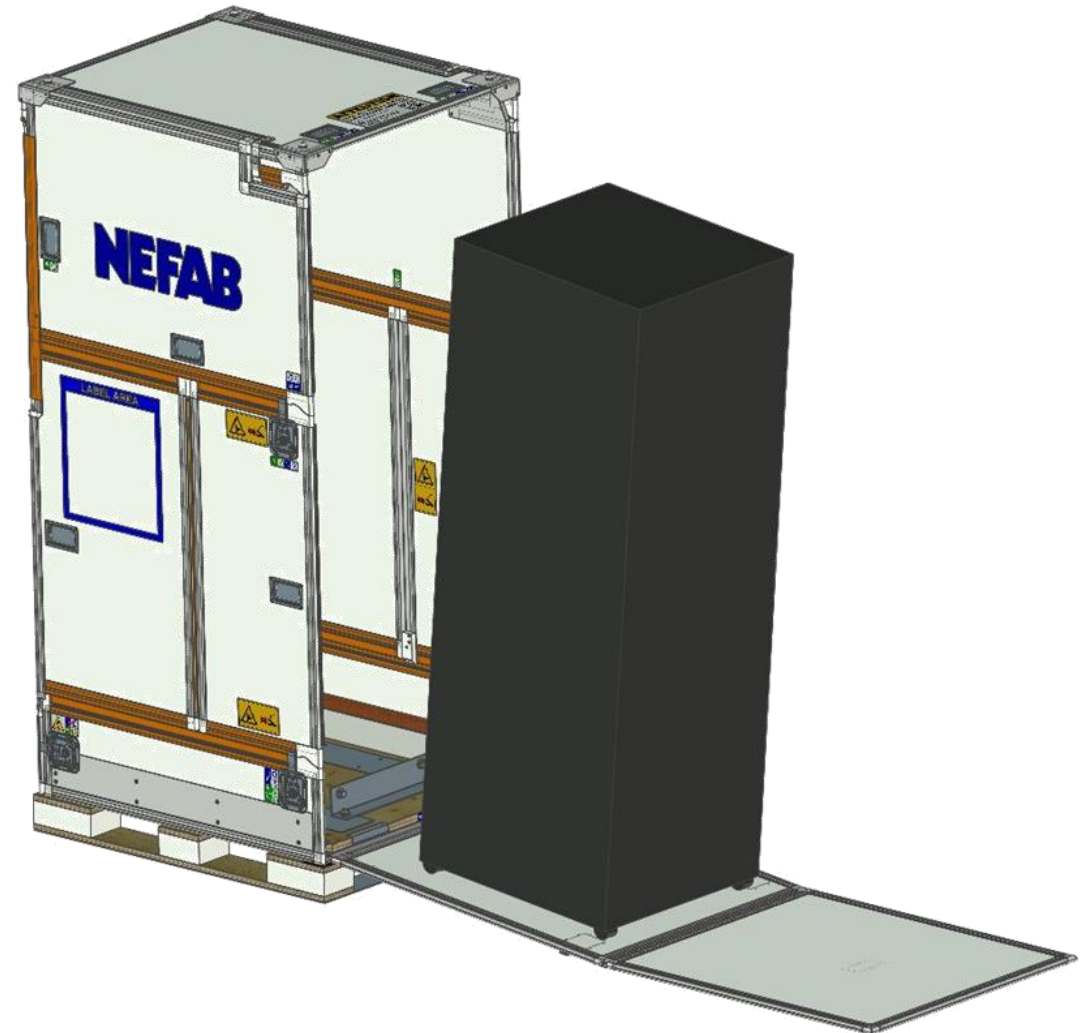
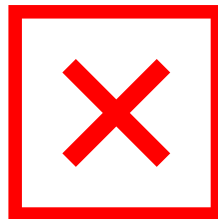
RACKPAK REAR HATCH INSTRUCTIONS



SAFETY WARNINGS

- Under no circumstances use the front door as a ramp.

The contents of the crate must be unloaded using a stand-alone wood ramp, or Nefab's Rack Jack mobile hydraulic lifting platform.



RACKPACK REAR HATCH INSTRUCTIONS



REAR HATCH OPERATION

RACKPAK COLLAPSE INSTRUCTIONS



COLLAPSE INSTRUCTIONS

Open lower **rear** latches.



Warning:

Do not open lower **front** latches!

RACKPAK COLLAPSE INSTRUCTIONS



COLLAPSE INSTRUCTIONS

Pull bottom edge of rear panel with both hands and rotate 90° upwards.

Hold open as needed.

